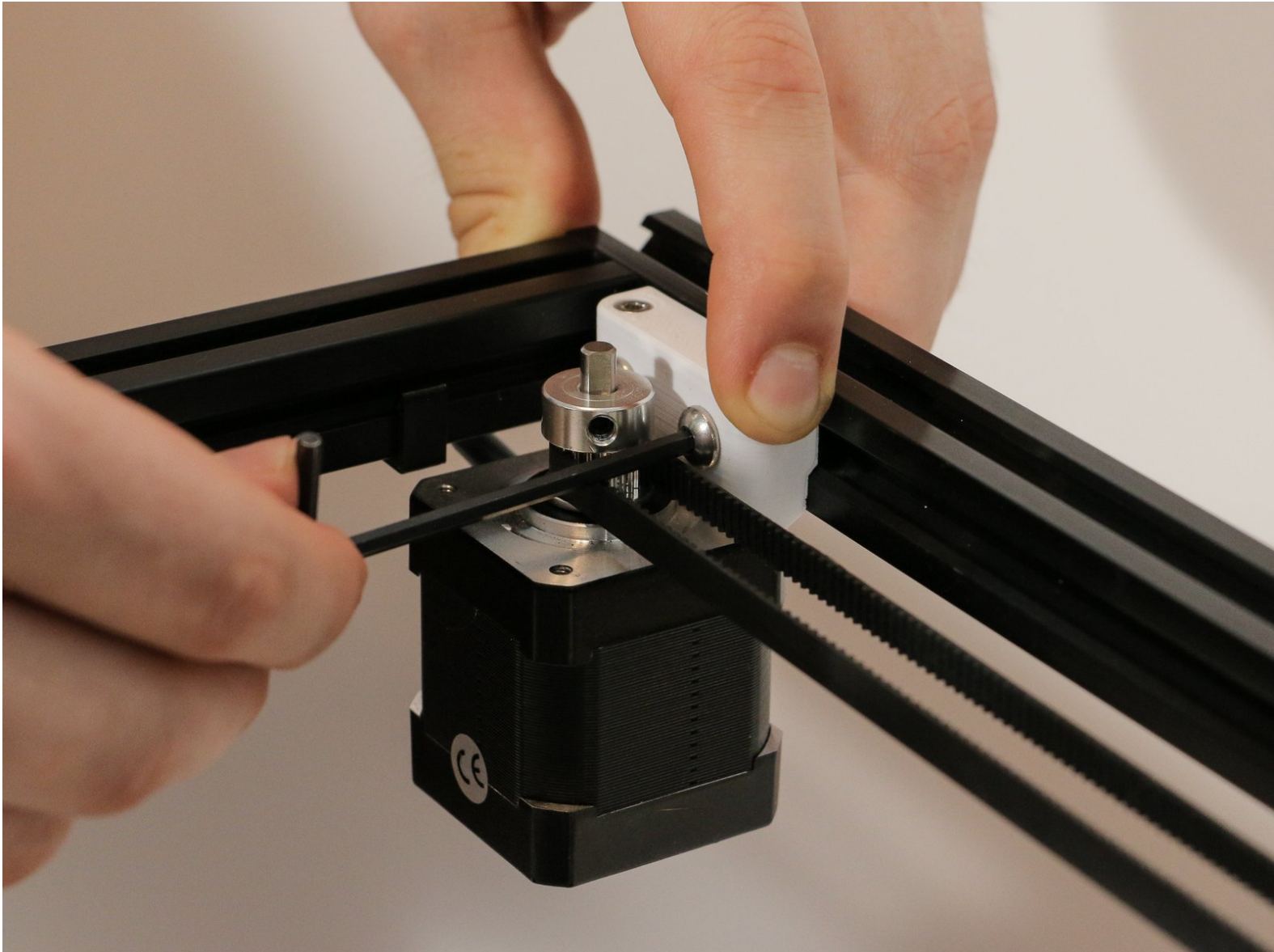


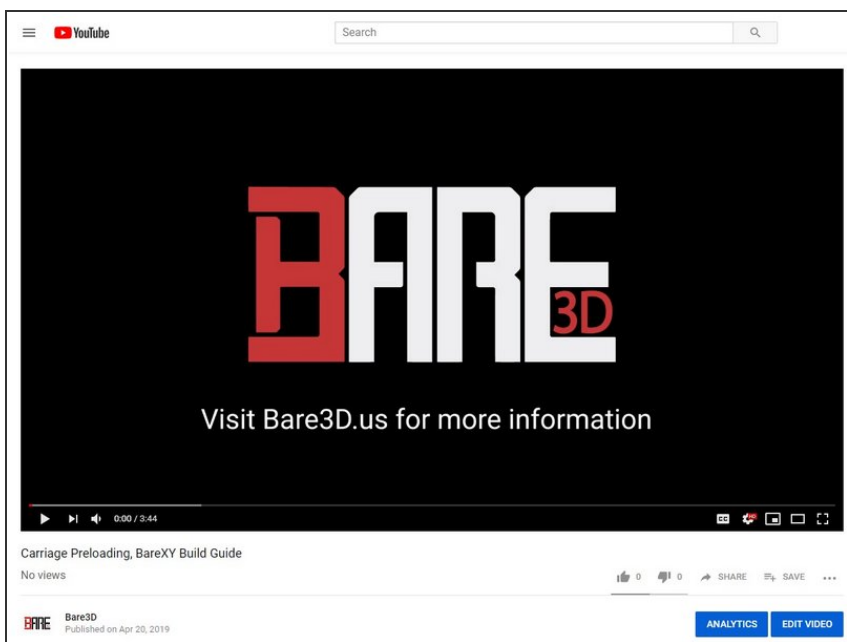



Section 1.8: Belts and Preload

Written By: Leland Crowther



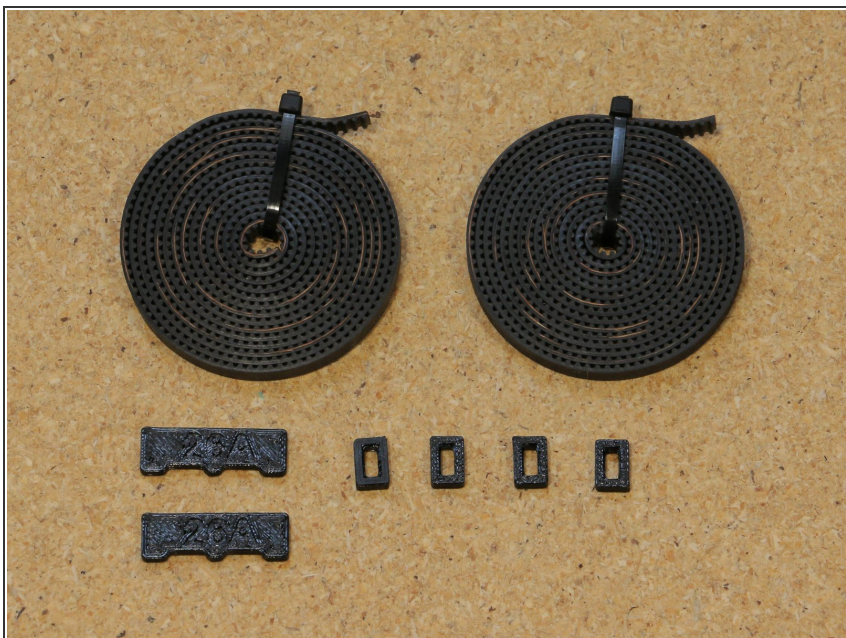
Step 1 — Preload Carriages



 I made a quick video to show how to preload the BareXY. See link below

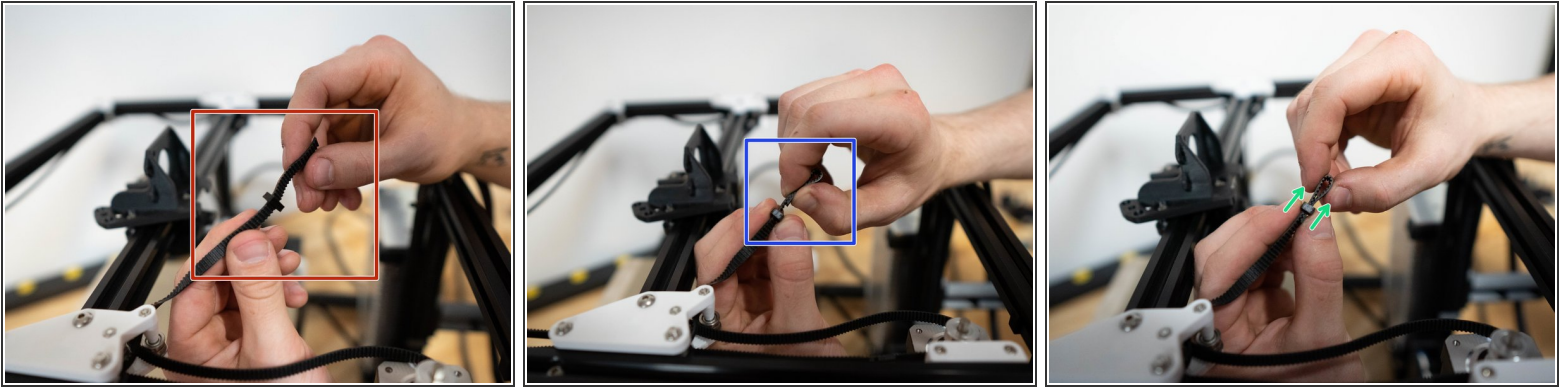
 [Preload Walk-Through Video Link](#)

Step 2 — Prepare Parts



- GT2 Belt (2x)
- Belt Lock (4x)
- Belt Pin 26A (2x)

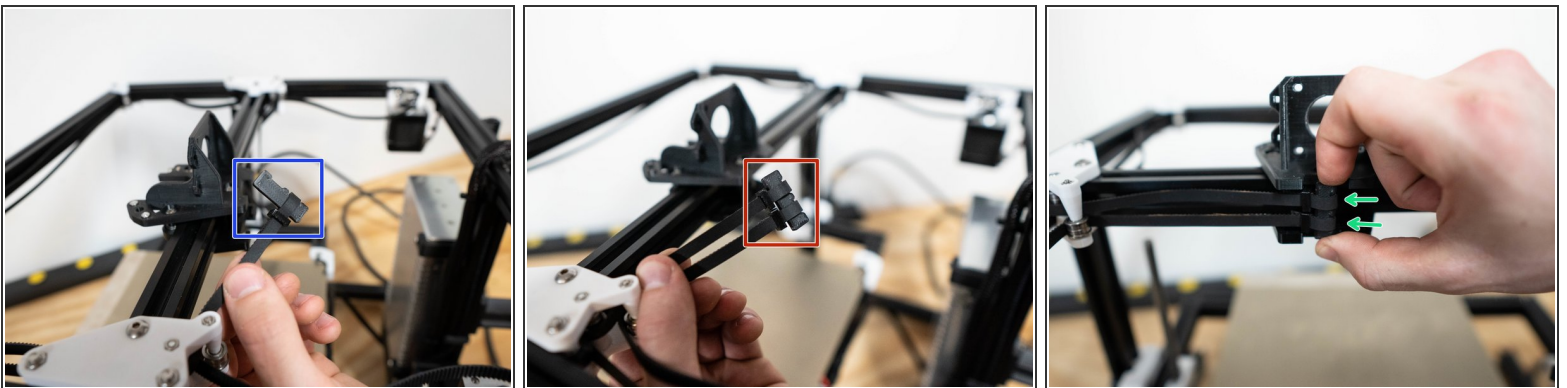
Step 3 — Insert Belt Into Belt Lock



 [I made this video to show how I install the belts. The following steps explain what I demonstrate in the video](#)

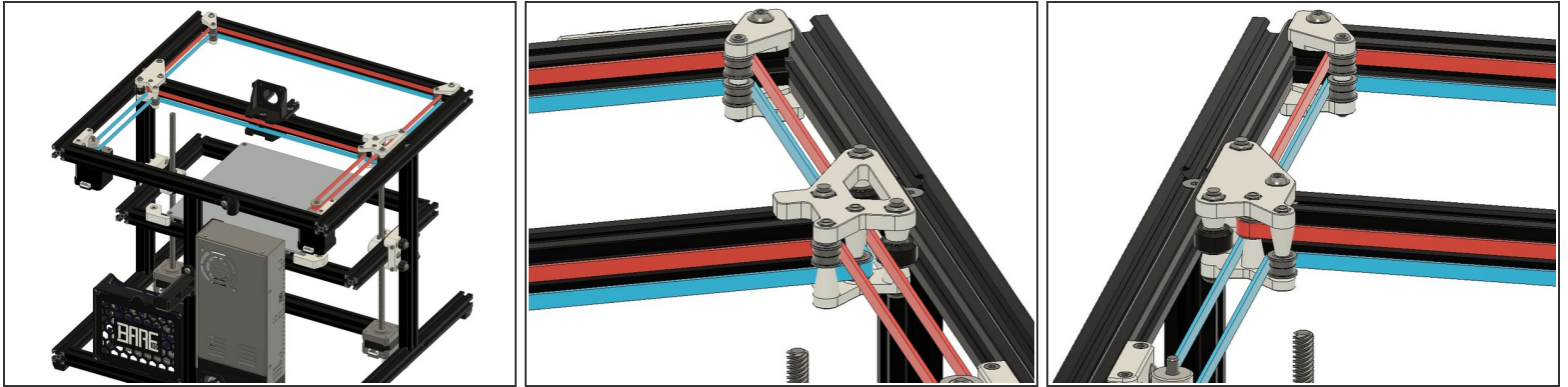
- Insert belt through belt lock
- Fold belt back on itself so teeth interlock
- Slid belt lock over end of belt

Step 4 — Attach Belts to Belt Pin and Insert Belt Pin Into Print Carriage



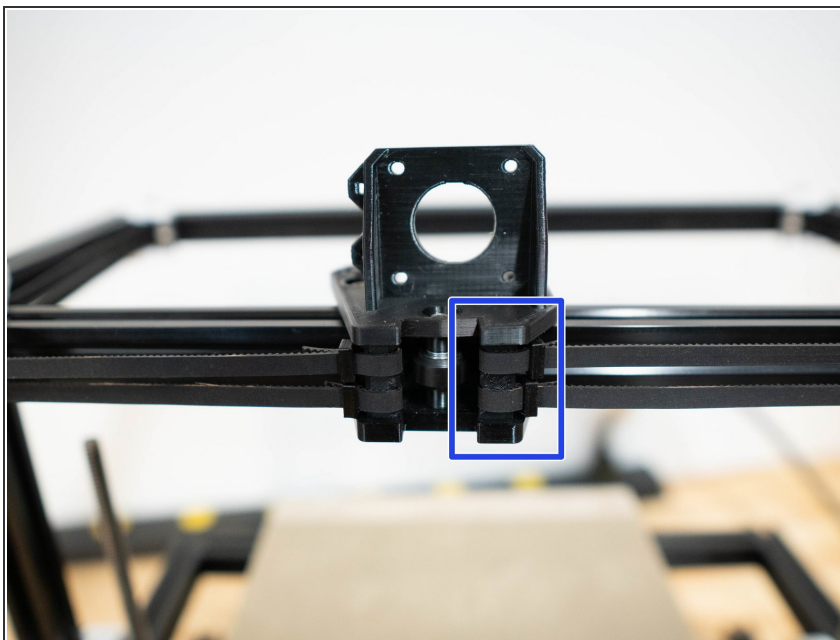
- Attach lower belt to belt pin
- Attach upper belt to belt pin
- Insert belt pin into print carriage

Step 5 — Belt paths



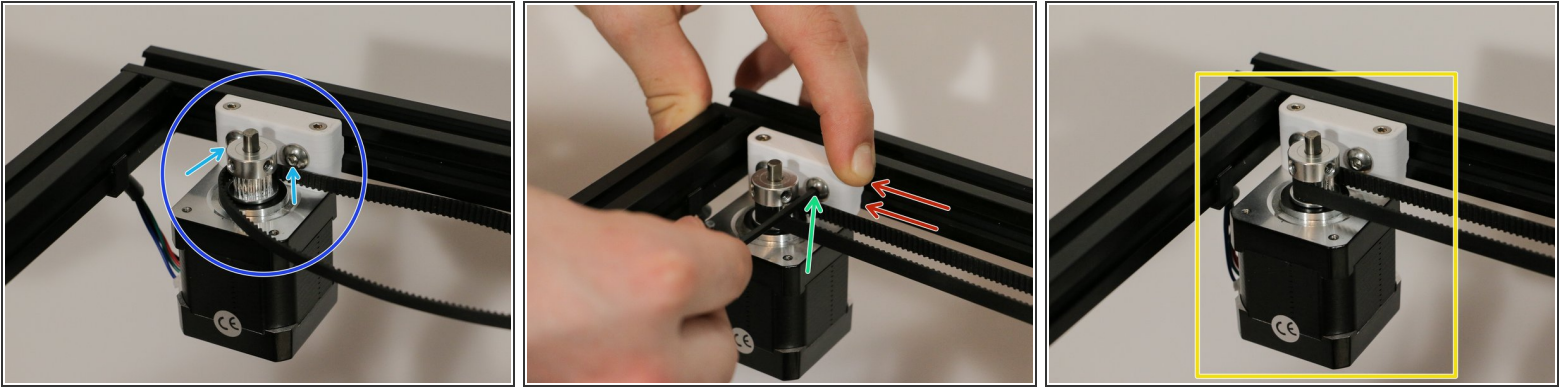
- i Top belt is shown as red and bottom belt is shown as blue in models
- i Feed each belt along the paths as shown

Step 6 — Attach Other End of Belt



- i After feeding belts through belt path fasten belts to belt pin with belt locks like we did earlier in step 3 and 4
- Feed belt pin into slots on right side print carriage

Step 7 — Tension Belt



- Make sure screws are loose enough that the motor assembly can slide
- Place belt around pulley
- Slide motor back applying tension to belt
- ⓘ Tip: belts should be taught but not excessively tight
- While applying tension to belt, tighten motor mount
- Tight motor mount with tensioned belt
- ⓘ **Same process for top and bottom belts**