

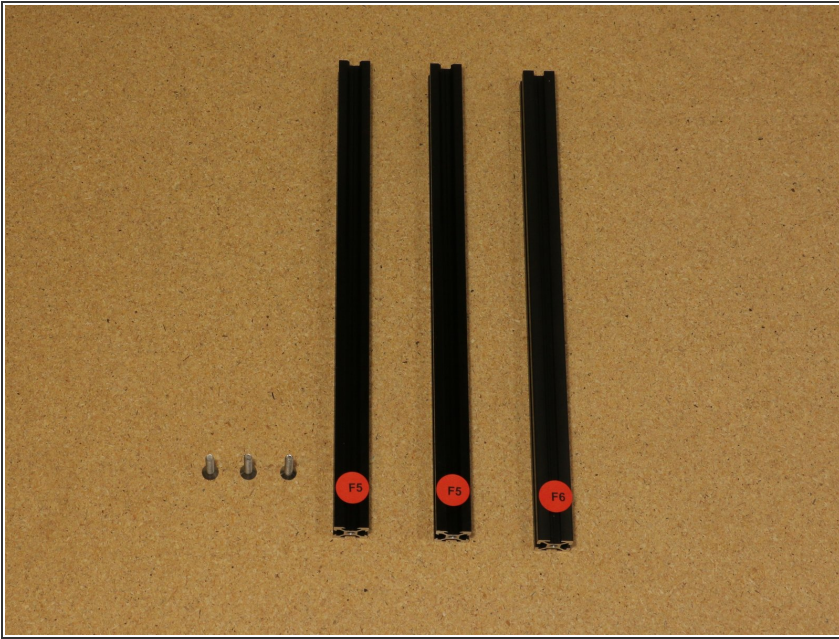


Section 1.2: Uprights, Power Supply, and Control Board

Written By: Leland Crowther

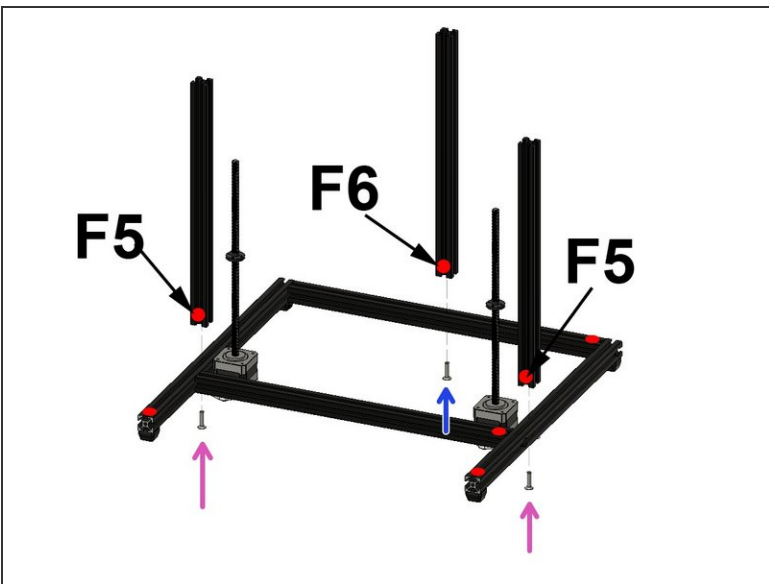


Step 1 — Prepare Parts



- F5 (2x)
- F6 (1x)
- M5x25 flat head screw (3x)

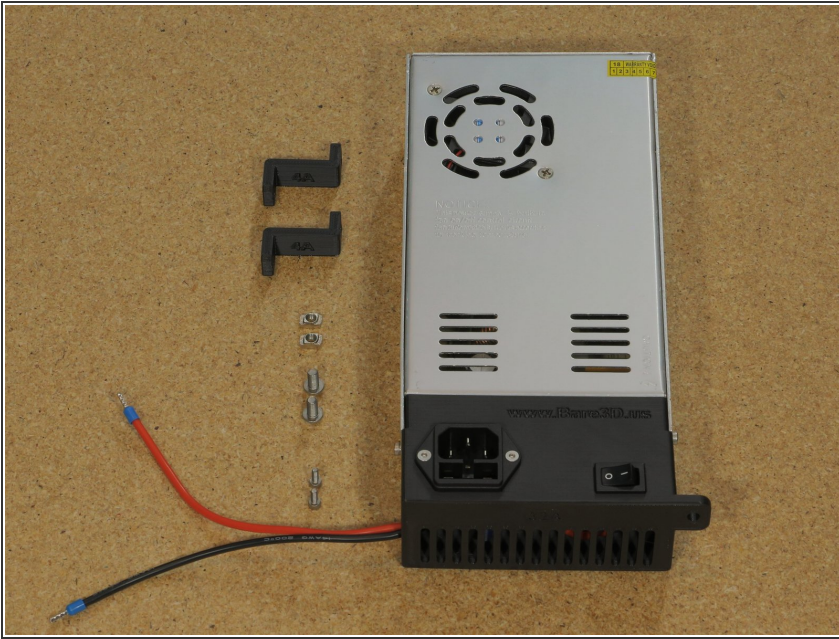
Step 2 — Attach Uprights



- Attach F6 to F3 with M5x25 screws
- Attach F5's to F1 and F2 with M5x25 screws

i Tip: Keep F5's Slightly loose for alignment later (lightly tighten and then loosen 1/4 turn)

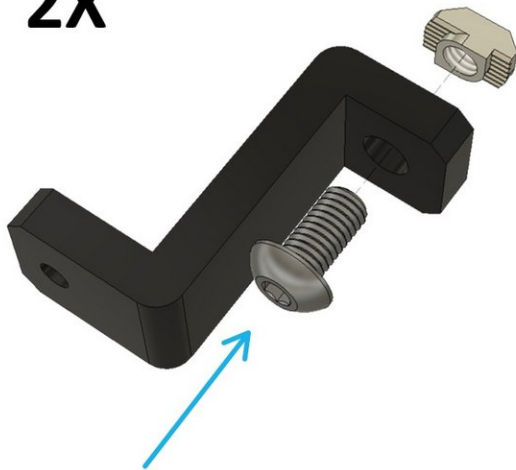
Step 3 — Prepare Parts



- Power Supply Mount 4A (2x)
- Power Supply (1x)
- M5x10 button head cap screw (2x)
- M5 Drop-In T Nut (2x)
- M3x8 socket head screw (2x)

Step 4 — Prepare Power Supply to be Mounted

2X



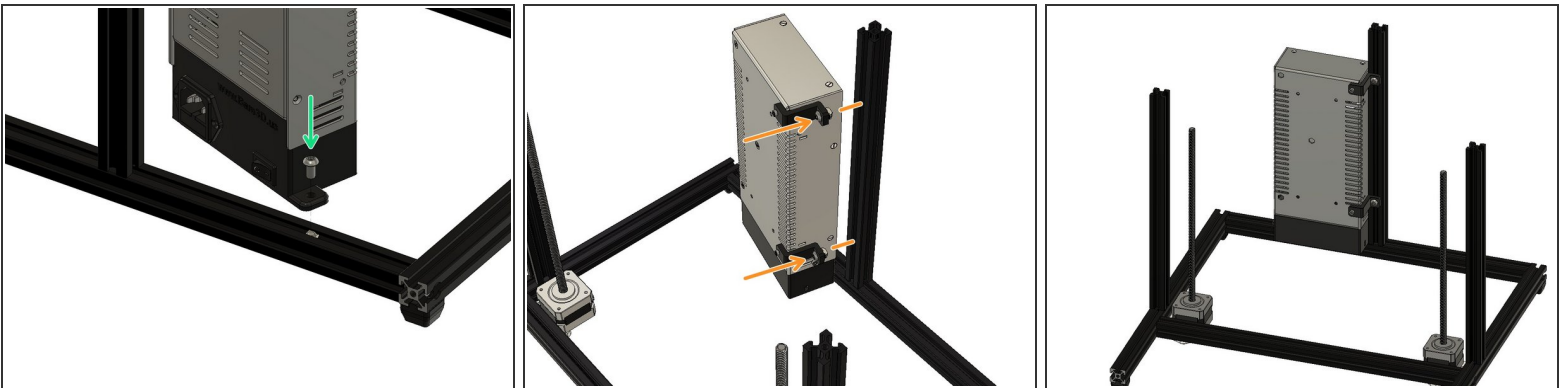
- Loosely attach M5x10 screw and M5 droop-in T nut to power supply bracket.
- Repeat the step above to create a second mounting bracket assembly.
- Attach both power supply mounting brackets to the power supply using two M3x8 screws.

Step 5 — Prepare Parts




- Power Supply Assembly (1x)
- M5x10 button head cap screw (1x)
- M5 Drop-In T Nut (1x)

Step 6 — Mount Power Supply Assembly to Frame



- Attach power supply base to frame using M5x10 screw and M5 drop-in T nut.

 Tip: attach to base and then pivot into place

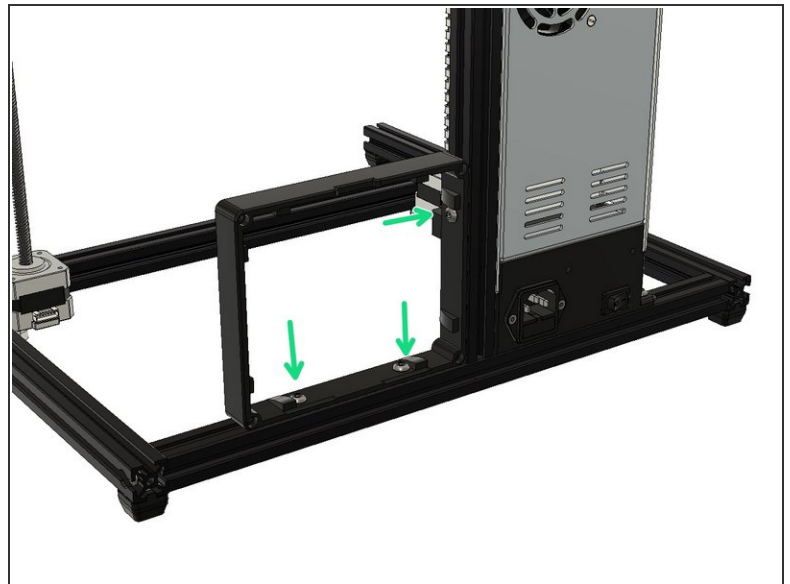
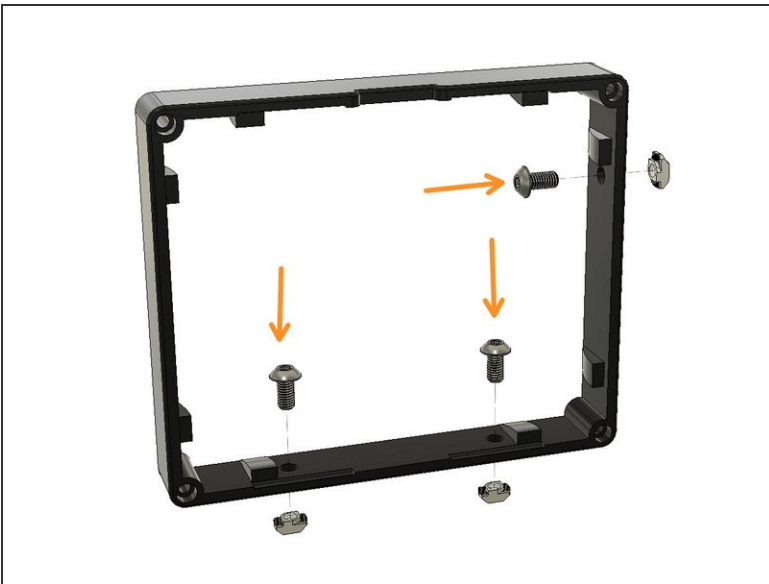
- Attach the two power supply mounting brackets to frame upright with hardware attached in step 4

Step 7 — Prepare Parts



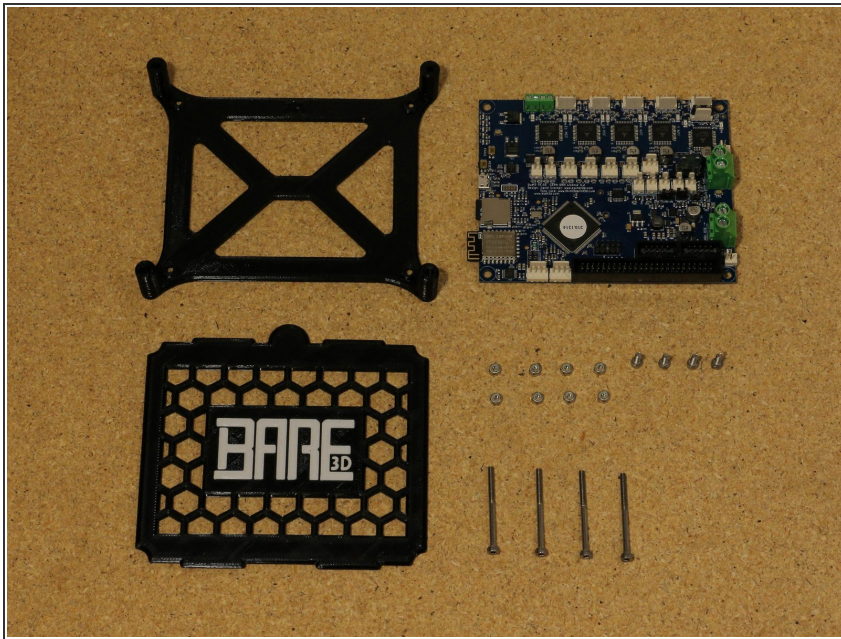
- DuetWifi Enclosure 5A (1x)
- M5X10 button head cap screw (3x)
- M5 Drop-In T Nut (3x)

Step 8 — Mount DuetWifi Enclosure 5A to Frame



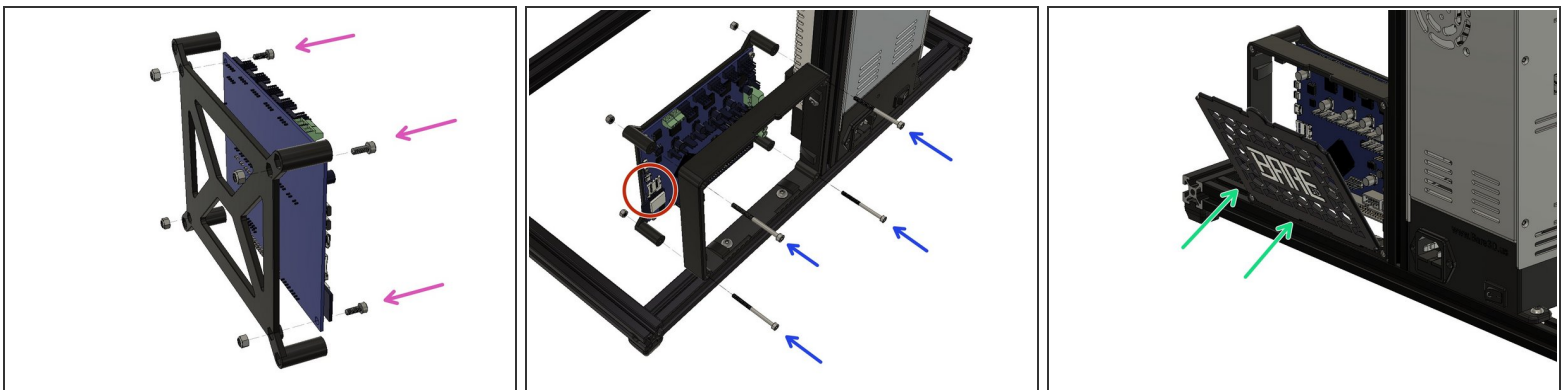
- Prepare to mount DuetWifi Enclosure 5A by attaching M5x10 and M5 drop-in T nut.
- Attach to frame

Step 9 — Prepare Parts



- DuetWifi (1x)
- DuetWifi Enclosure 6A (1x)
- DuetWifi Enclosure 7A (1x)
- M3x8 socket head screw (4x)
- M3x40 socket head screw (4x)
- M3 Nylock nut (8x)

Step 10 — Mounting DuetWifi to Enclosure and Frame



- Attach DuetWifi to DuetWifi Enclosure 6A using M3x8 screws and M3 Nylock nuts.
- SD card slot and USB port should be facing away from power supply (as shown)
- Mount assembly from last step to DuetWifi enclosure 5A using M3x40 screws and M3 Nylock nuts.
- Snap in DuetWifi Enclosure 7A