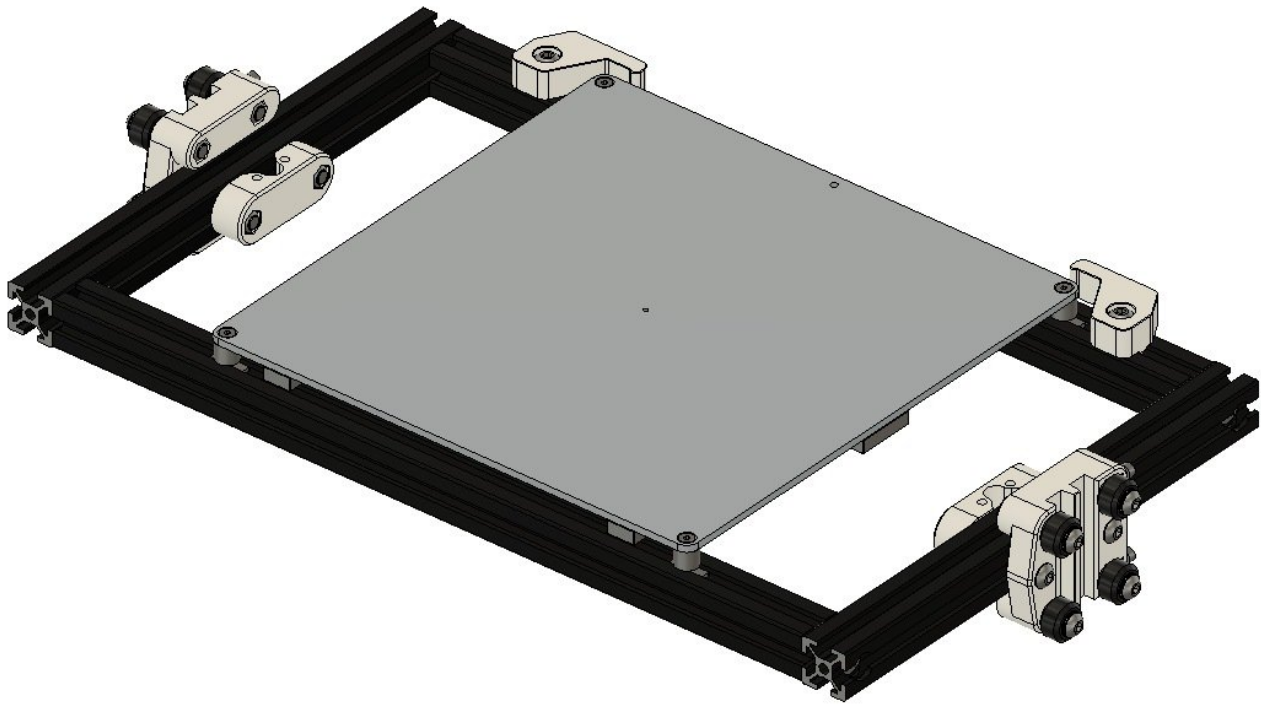


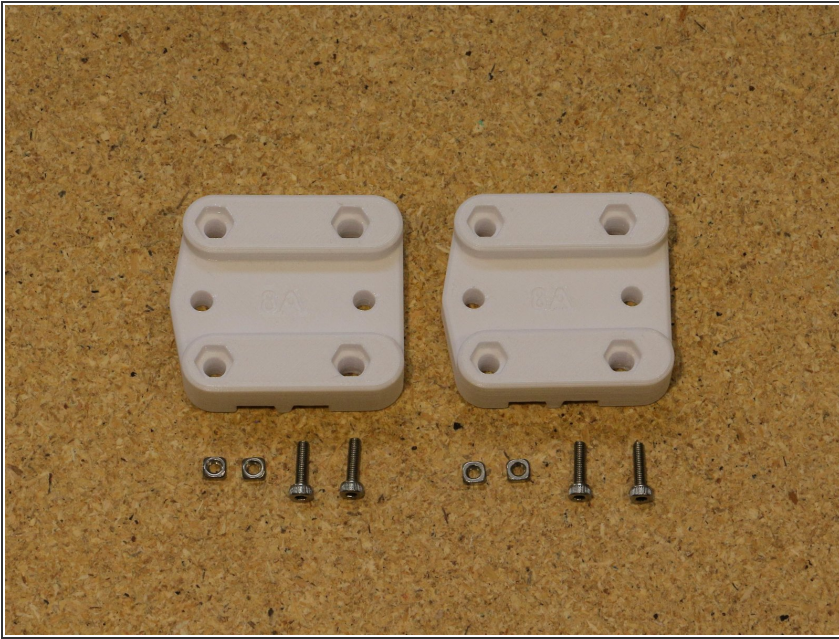


Section 1.3: Build Platform and Z Carriages

Written By: Leland Crowther



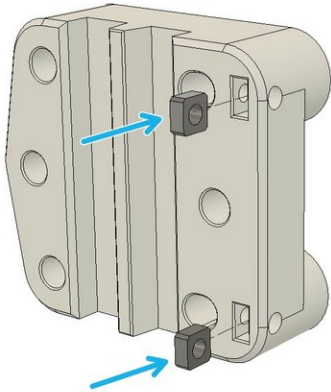
Step 1 — Prepare Parts



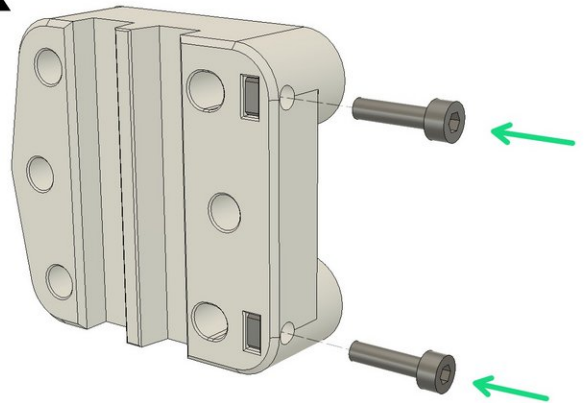
- Z Carriage 8A (2x)
- M3x12 socket head screw (4x)
- M3 Square Nut (4x)

Step 2 — Preparing Z Carriage for Assembly (Part 1)

2X

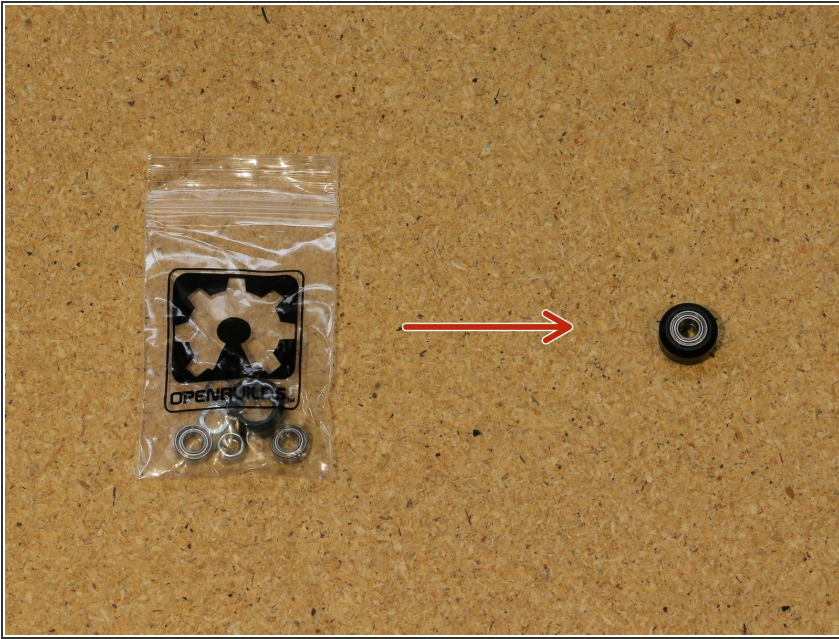


2X




- Insert M3 square nuts
- Insert M3x12 screws

Step 3 — Assemble OpenBuilds Mini V Wheel

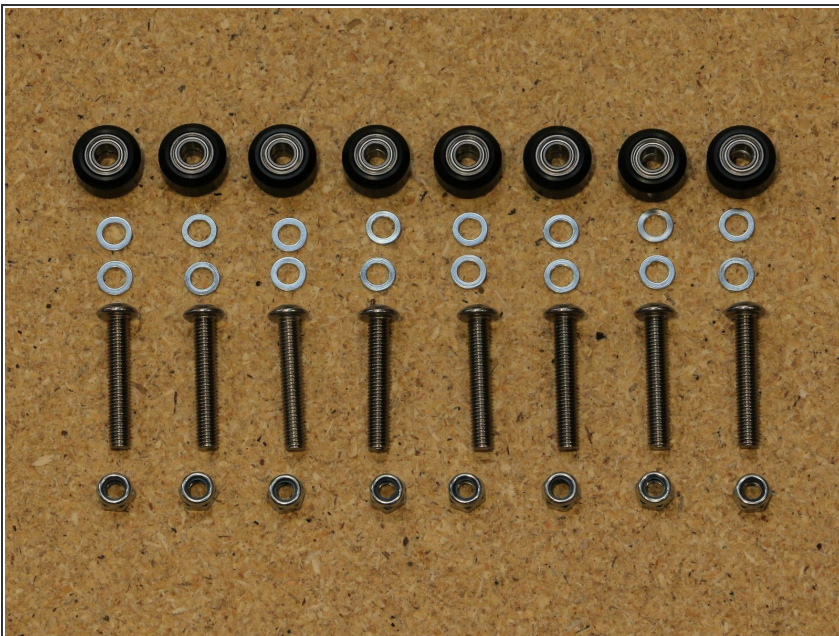


- Assemble all 15 Mini V Wheels

 [Assembly Video](#)

 Set aside the extra 15 Precision Shims and 15 Nylock nuts, they will be used in future steps

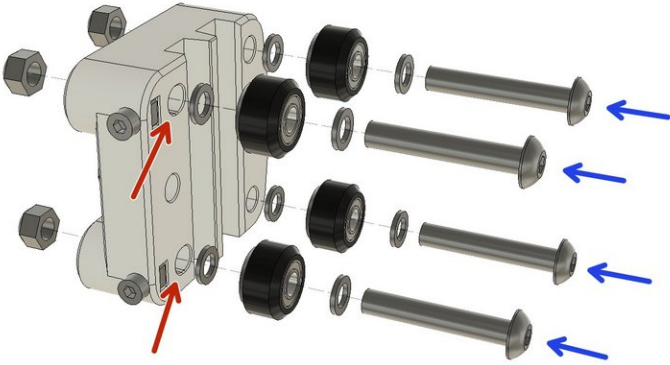
Step 4 — Prepare Parts



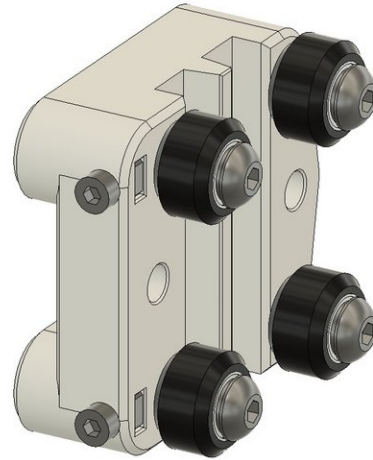
- Z Carriage 8A Assembly (2x)
- M5x30 button head cap screw (8x)
- Mini V Wheel kit (8x)
- Open Builds Precision shim (16x)

Step 5 — Assemble 2 Z Carriages

2X



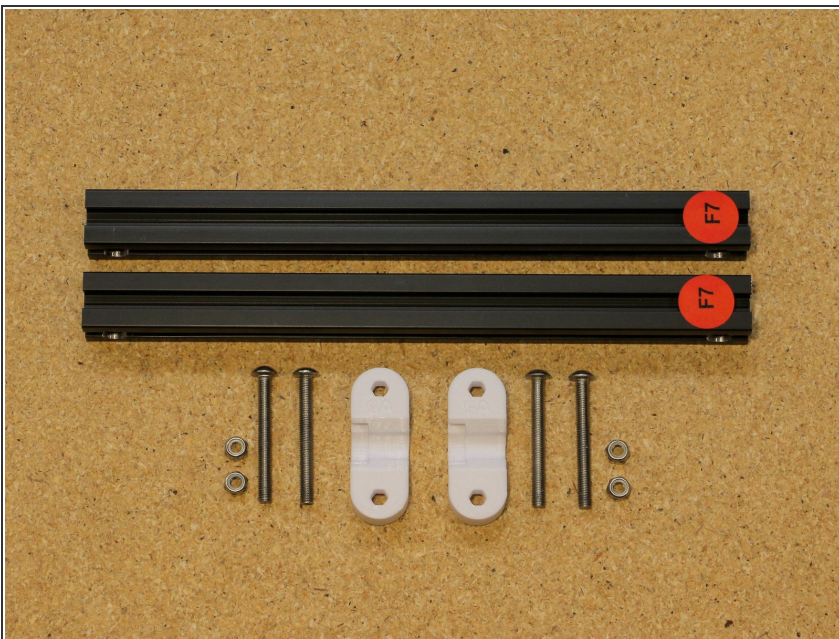
2X



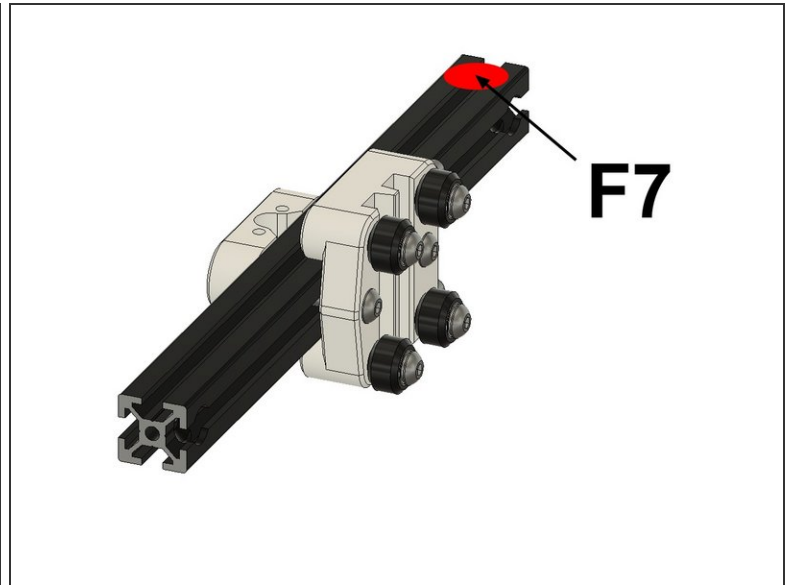
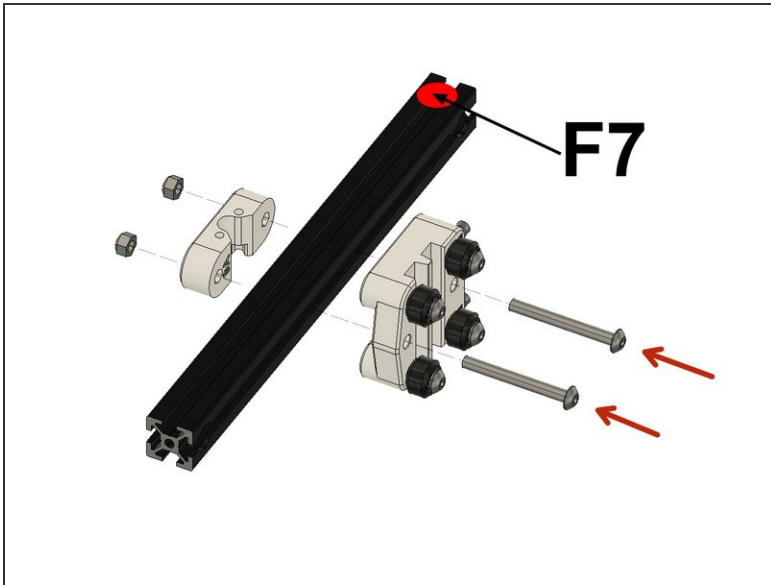
- Assemble Carriage

⚠ Keep slightly loose for preloading later. Should be able to slide in slotted holes

Step 6 — Prepare Parts

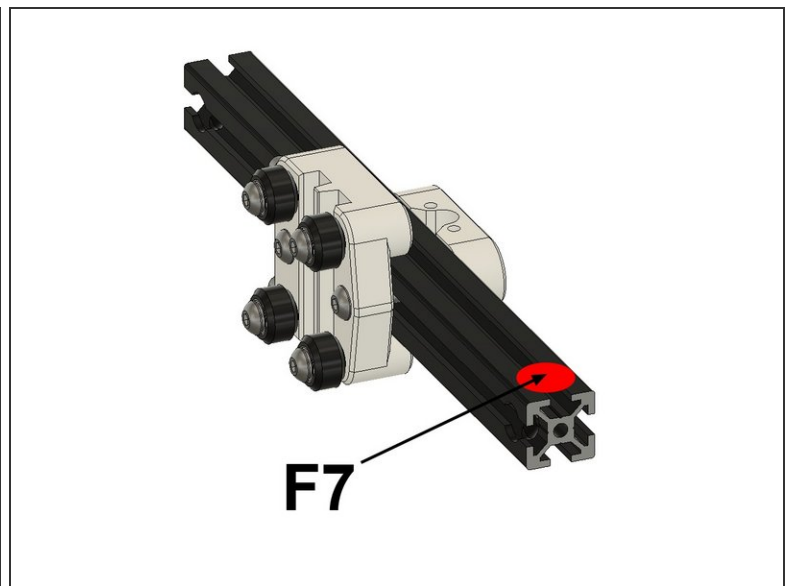
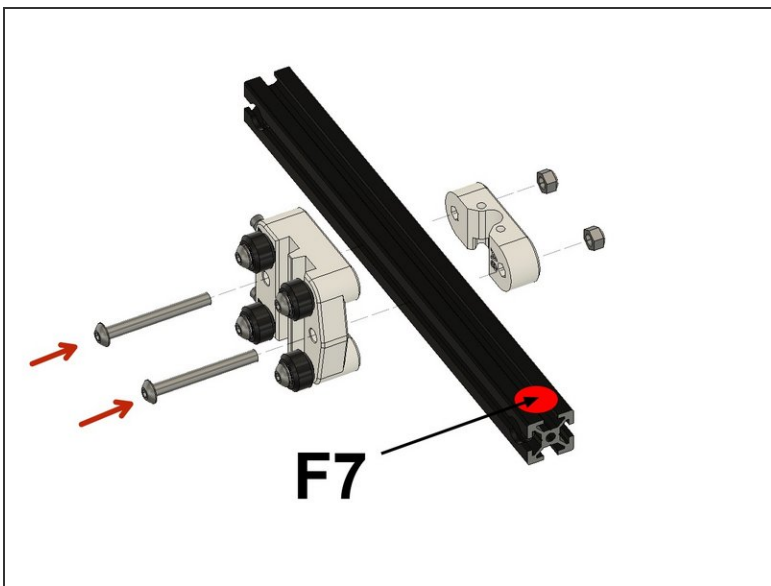


- Z Carriage Assembly (x2) (from last step)
- F7 (x2)
- M5x45 button head cap screw (4x)
- M5 nylock nut (x4)
- Lead Nut Bracket 9A (x2)

Step 7 — Mount Z Carriage and Leadscrew Nut Bracket to F7

- Attach Z carriage and leadnut assembly to F7 using M5x45 screws and M5 Nylock nuts

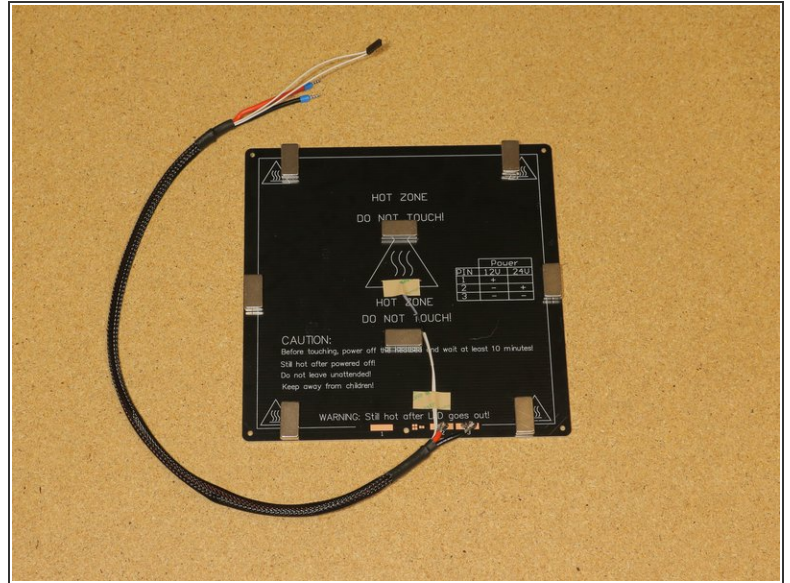
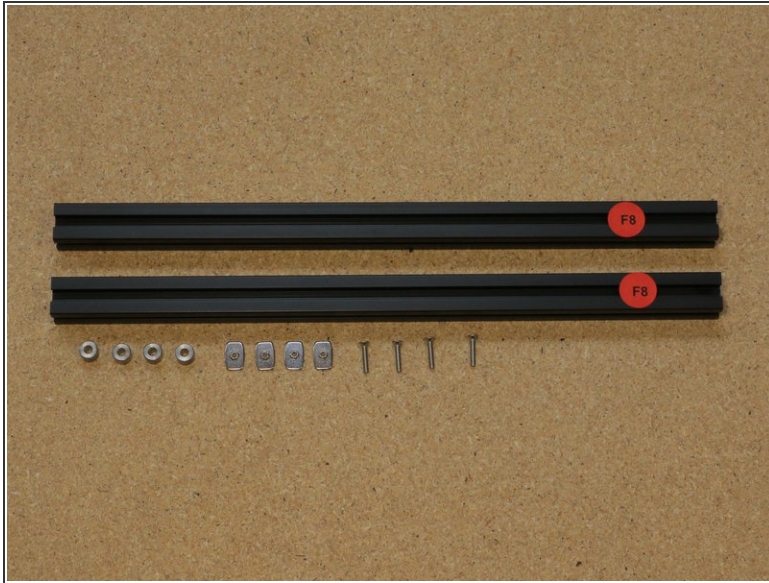
⚠ Sticker is for correct orientation

Step 8 — Mirror of last step

- Attach Z carriage and leadnut assembly to F7 using M5x45 screws and M5 Nylock nuts

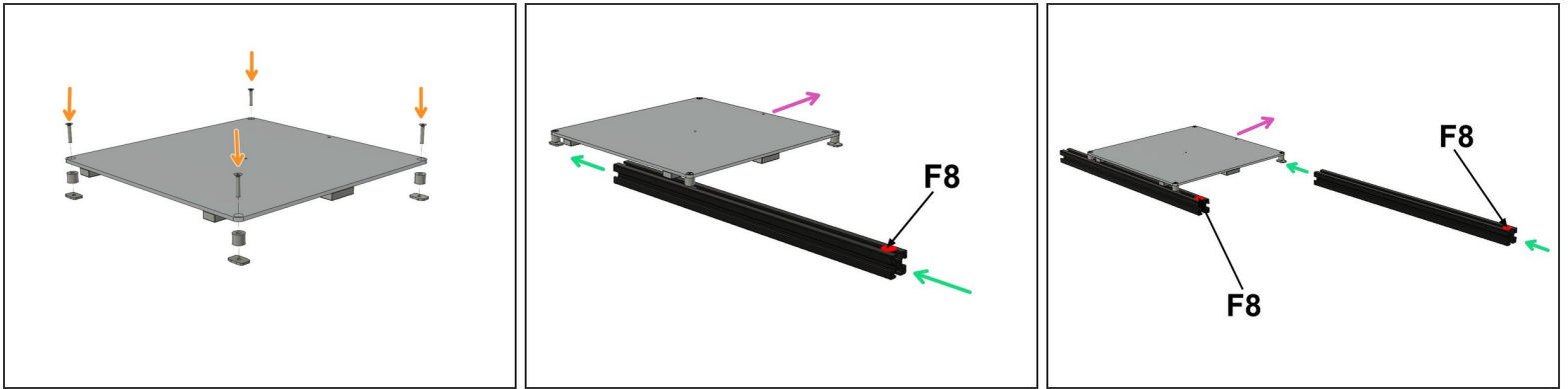
⚠ Sticker is for correct orientation

Step 9 — Prepare Parts



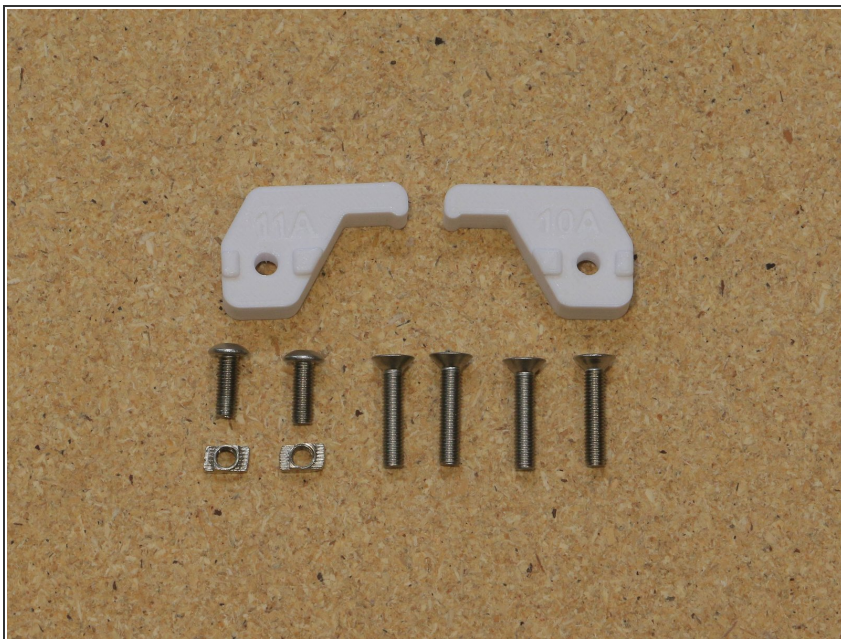
- MK3 Heated Bed (1x)
- F8 (2x)
- M3x16 flat head screw (4x)
- M3 T Nut (4x)
- Steel Bed Spacer (x4)

Step 10 — Attach Bed to Frame



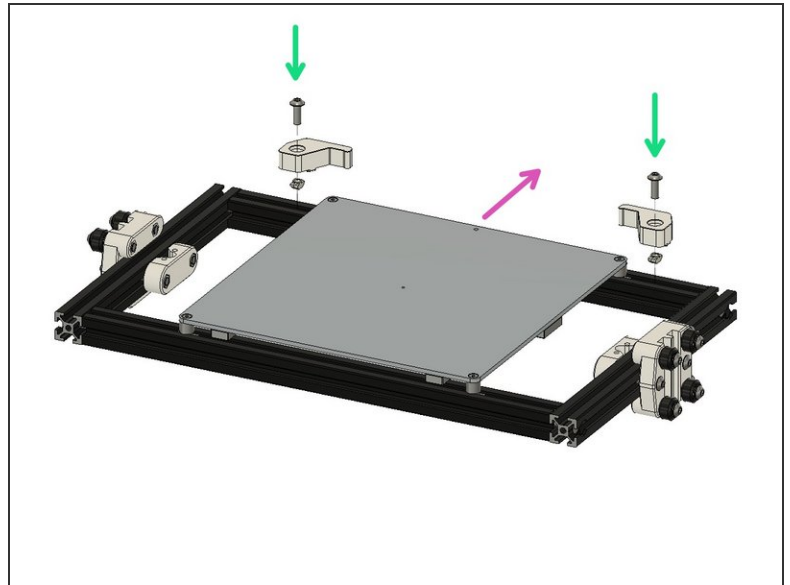
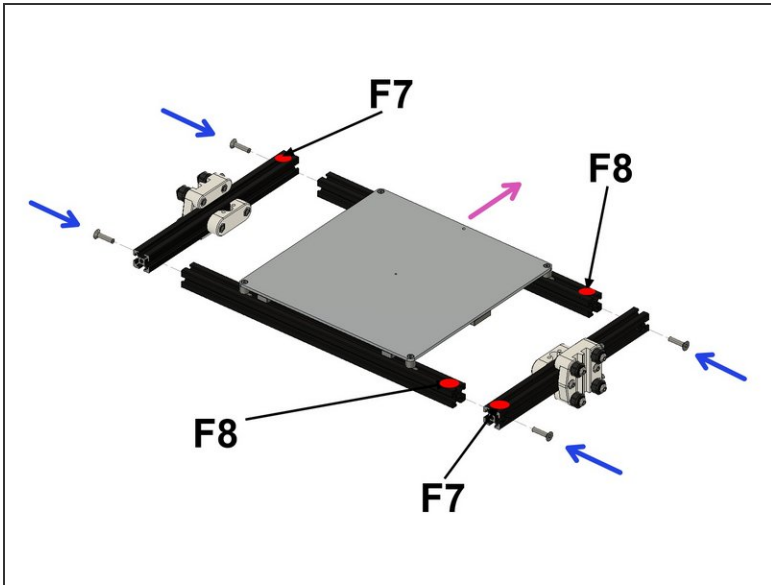
- Wires should be in the back of bed
- Prepare to mount bed by attaching the M3x16 flat head screws, bed spacers and M3 T nuts. Do not fully tighten.
- Slide bed frame extrusions (F8) onto bed.
- ⓘ Leave T-nuts loose. Final position will be set later

Step 11 — Prepare Parts



- FlexPlate Aligner R 11A (1x)
- FlexPlate Aligner L 10A (1x)
- M5x20 socket head screw (4x)
- M5x14 button head cap screw (2x)
- M5 Drop-In T Nut (2x)

Step 12 — Assemble Bed Frame



- Bed wires should be facing the back
- Assemble the bed frame using M5x25 screws
- Mount flexplate aligners (exact position will be set later).

⚠ Flexplate aligners mount to the same side as bed cables