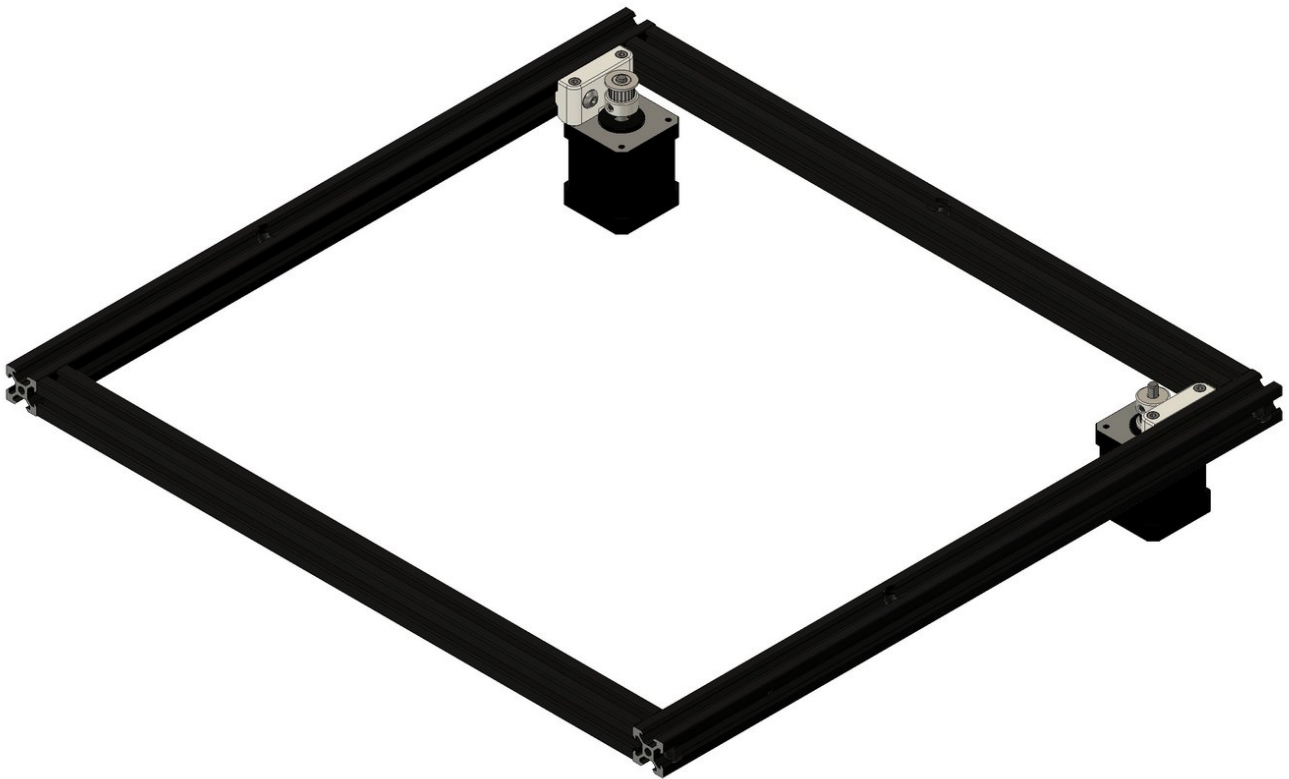


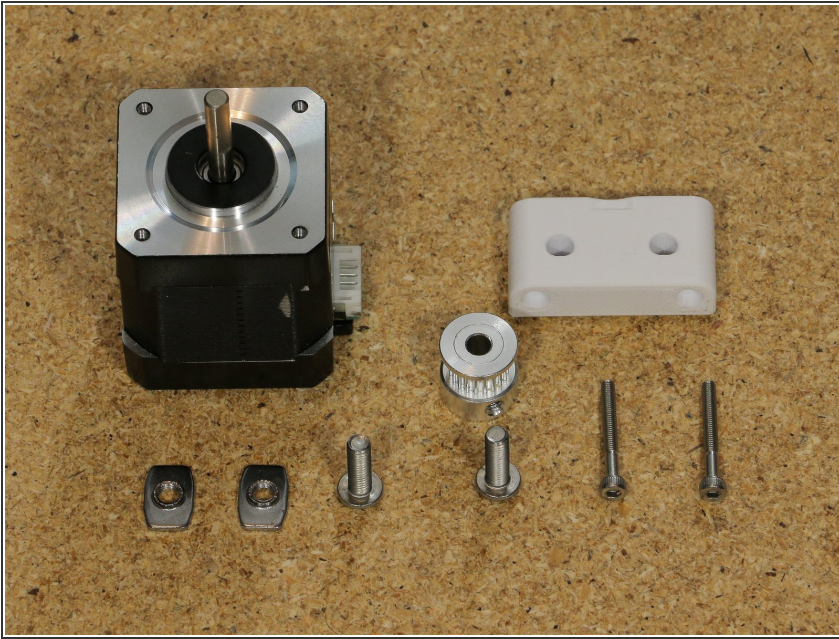


Section 1.4: Top Frame, and X and Y Axes Motors

Written By: Leland Crowther

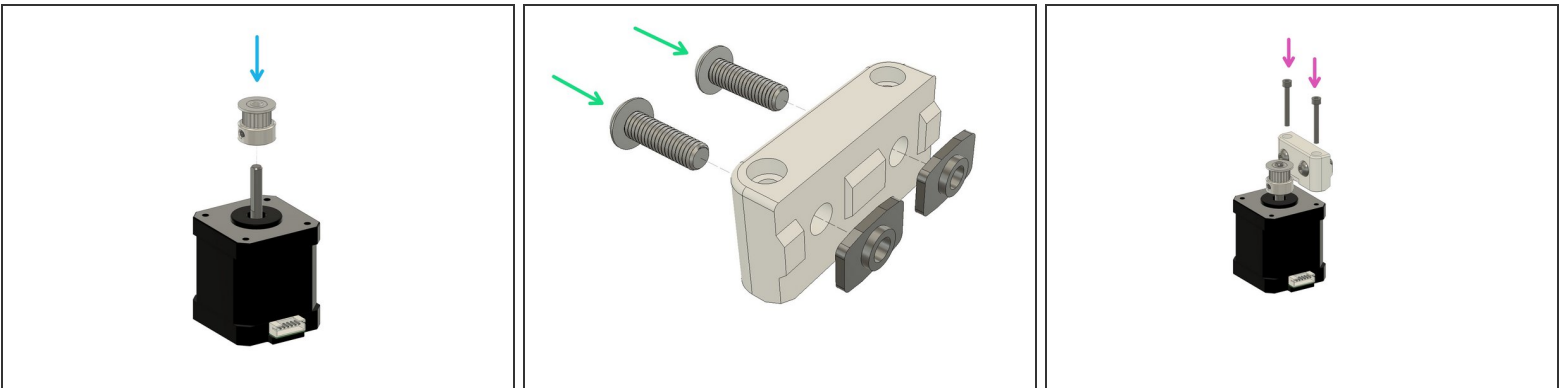


Step 1 — Prepare Parts



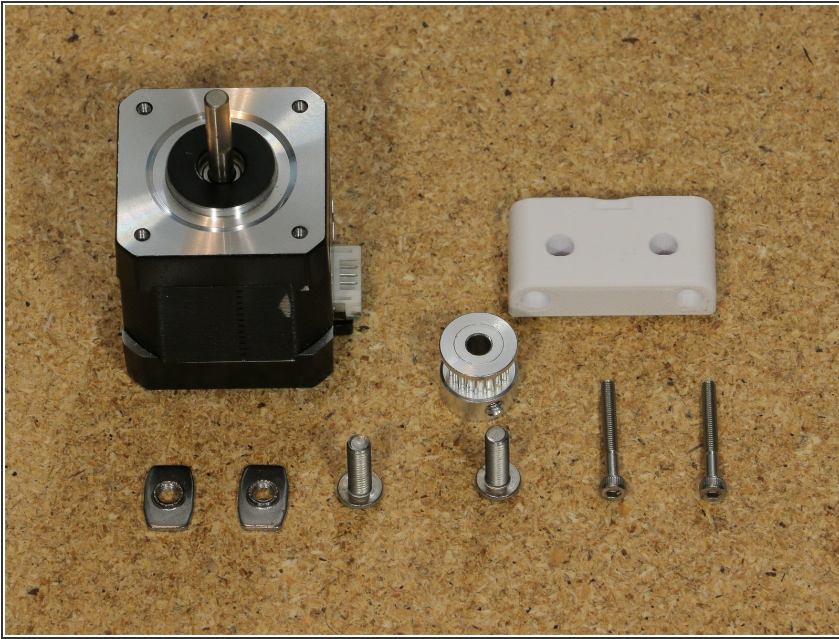
- XY Motor Mount 12A (1x)
- XY Axes Motor (1x)
- GT2 20T Pulley (1x)
- M5x16 button head cap screw (2x)
- M5 T Nut (2x)
- M3x22 socket head screw (2x)

Step 2 — Assemble XY Axes Motor Assembly (Left)



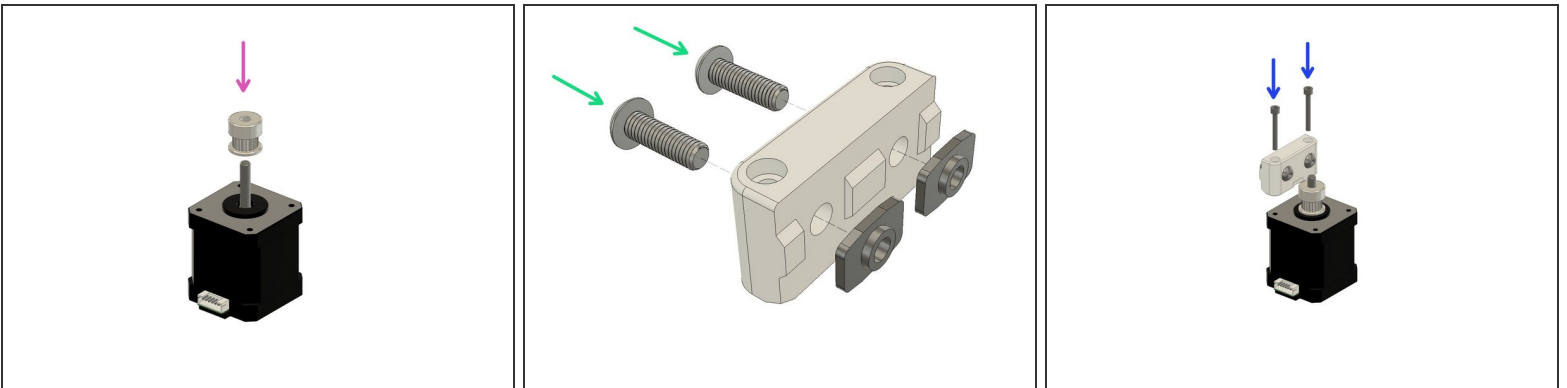
- Attach GT2 20T pulley onto motor shaft so that one of the set screws lines up with flat side of the motor's D shaft.
- Fasten M5x16 screws and M5 T nuts to XY motor mount 12A.
- Assemble assemblies from last two parts using M3x22 screws.

Step 3 — Prepare Parts



- XY Motor Mount 12A (1x)
- XY Axes Motor (1x)
- GT2 20T Pulley (1x)
- M5x16 button head cap screw (2x)
- M5 T Nut (2x)
- M3x22 socket head screw (2x)

Step 4 — Assemble XY Axes Motor Assembly (Right)

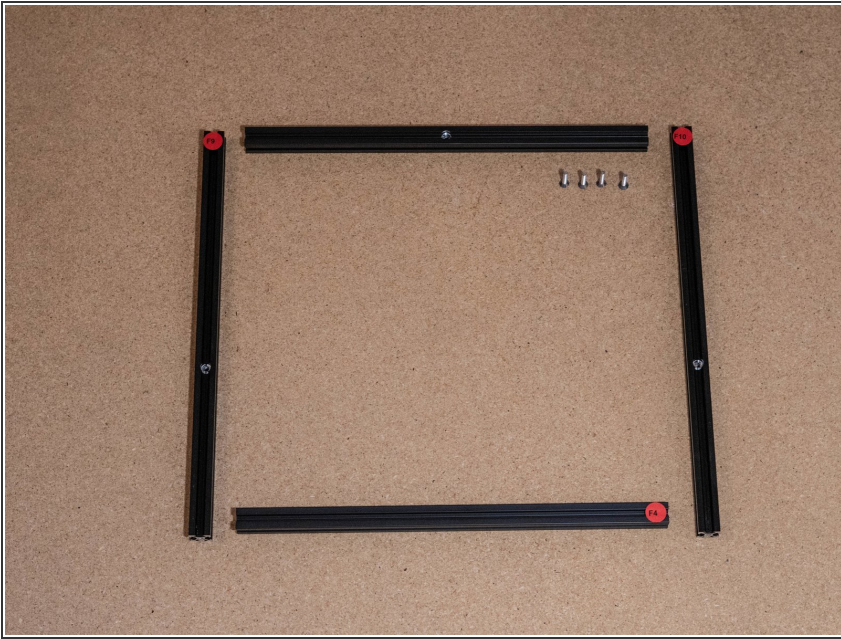


- Attach GT2 20T pulley onto motor shaft so one of the set screws lines up with flat side of D shaft

⚠ Pay attention to pulley orientation. (it should be flipped compared to the left assembly)

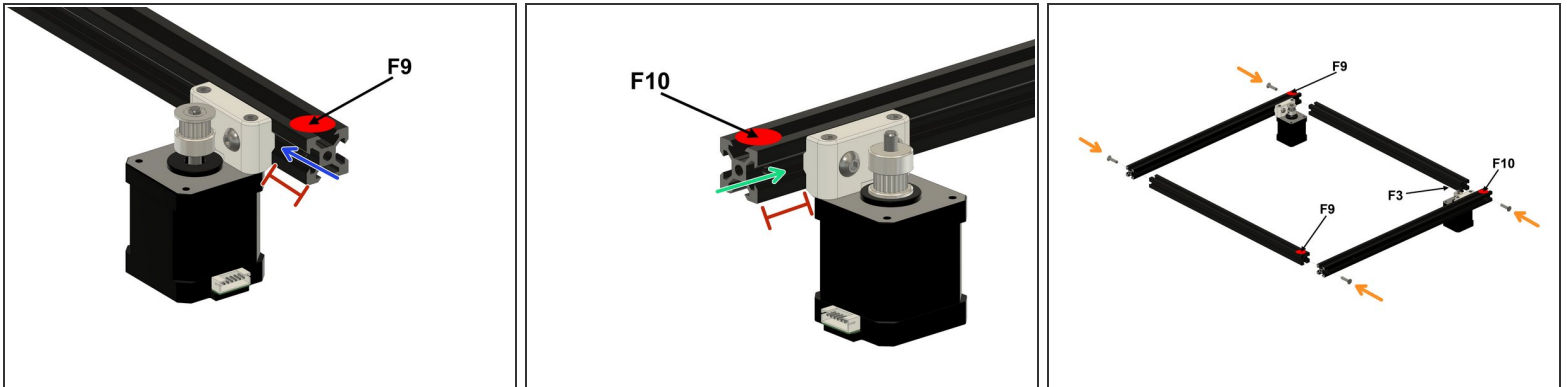
- Fasten M5x16 screws and M5 T nuts to XY motor mount 12A
- Assemble assemblies from last two steps using M3x22 screws

Step 5 — Prepare Parts



- XY axes Motor assembly L (1x)
- XY axes Motor assembly R (1x)
- F9 (1x)
- F10 (1x)
- F3 (1x)
- F4 (1x)
- M5x25 flat head screw (4x)

Step 6 — Assemble Top of Frame



- Slide XY motor assembly L onto F9

⚠ Pay attention to stickers for orientation

- Slide XY motor assembly R onto F10

- Roughly 20mm

- Assemble top frame using M5x25 screws into pre tapped holes

ⓘ F3 sticker should face down

⚠ front piece should say F4 not F9